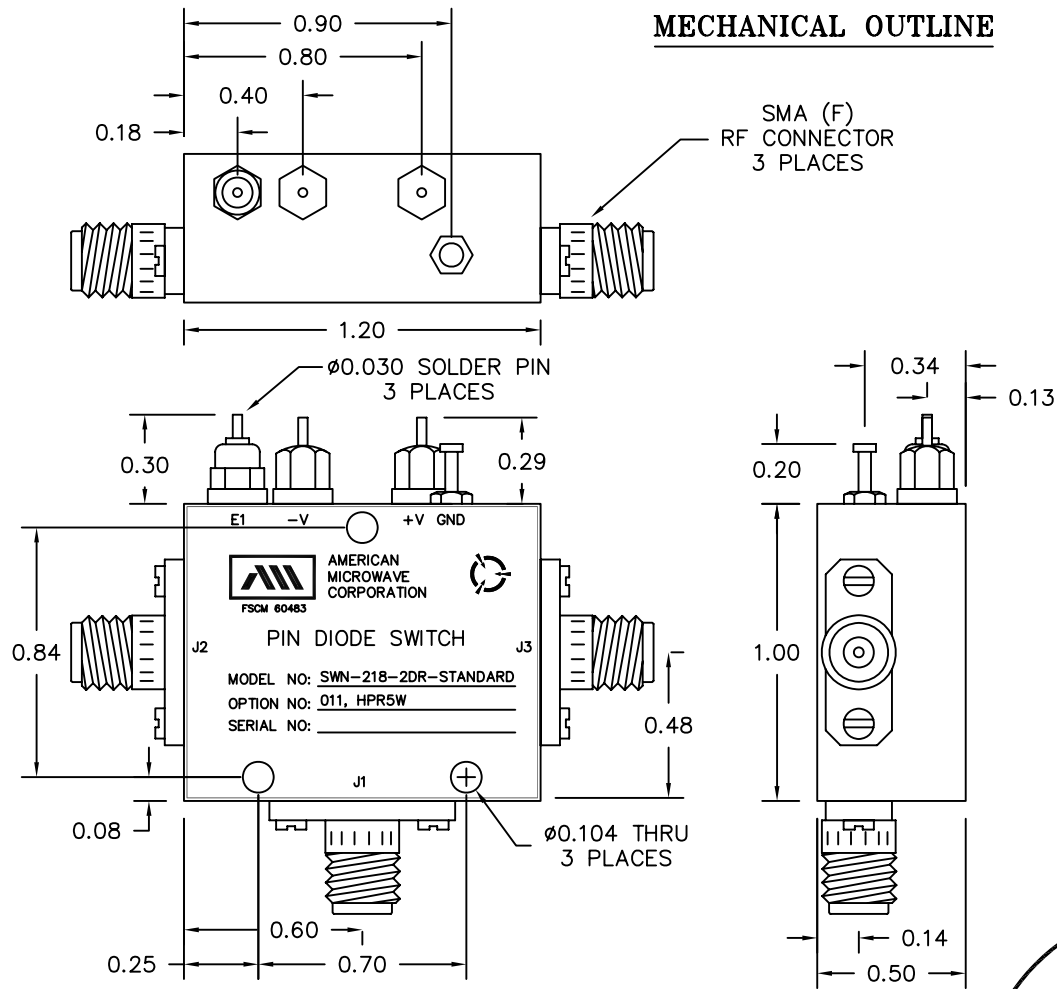


DESCRIPTION

AMC MODEL SWN-218-2DR-STANDARD OPTION: 400M2, HPR5W IS A SINGLE POLE TWO THROW, HIGH POWER (5 WATTS) REFLECTIVE T/R SWITCH MODULE WITH VERY LOW INSERTION LOSS, HIGH ISOLATION, LOW VIDEO TRANSIENT AND WITH INTEGRAL TTL DRIVER, DESIGNED FOR 400 MHZ TO 2.0 GHZ FREQUENCY RANGE OPERATION.

REVISIONS				
ZONE	REV.	DESCRIPTION	DATE	APPROVED
	-	ORIGINAL JOB# 606108	08/07/06	

MECHANICAL OUTLINE



ALL DIMENSIONS ARE IN INCHES
TOLERANCES:
X.XX ±0.020
X.XXX ±0.010

AMERICAN MICROWAVE CORPORATION

7311-G GROVE ROAD
FREDERICK, MARYLAND 21704 USA
TEL: 301-662-4700 FAX: 301-662-4938
WEBSITE: www.americanmicrowavecorp.com
E-MAIL: sales@americanmicrowavecorp.com
ISO 9001:2000 CERTIFIED



APPROVALS		DATE	TITLE		
DRAWN <i>PRB</i>		08/07/06	PRODUCT FEATURE SWN-218-2DR-STANDARD OPTIONS: 400M2, HPR5W		
REDRAWN <i>RA</i>		09/15/06	400 MHZ TO 2 GHZ, SINGLE POLE TWO THROW SWITCH	SIZE A	FSCM NO. 60483
ISSUED			DWG NO. 100-4427-15	REV. -	
SCALE N:S			SHEET 2 OF 4		

DESCRIPTION

AMC MODEL SWN-218-2DR-STANDARD OPTION: 400M2, HPR5W IS A SINGLE POLE TWO THROW, HIGH POWER (5 WATTS) REFLECTIVE T/R SWITCH MODULE WITH VERY LOW INSERTION LOSS, HIGH ISOLATION, LOW VIDEO TRANSIENT AND WITH INTEGRAL TTL DRIVER, DESIGNED FOR 400 MHZ TO 2.0 GHZ FREQUENCY RANGE OPERATION.

SPECIFICATIONS

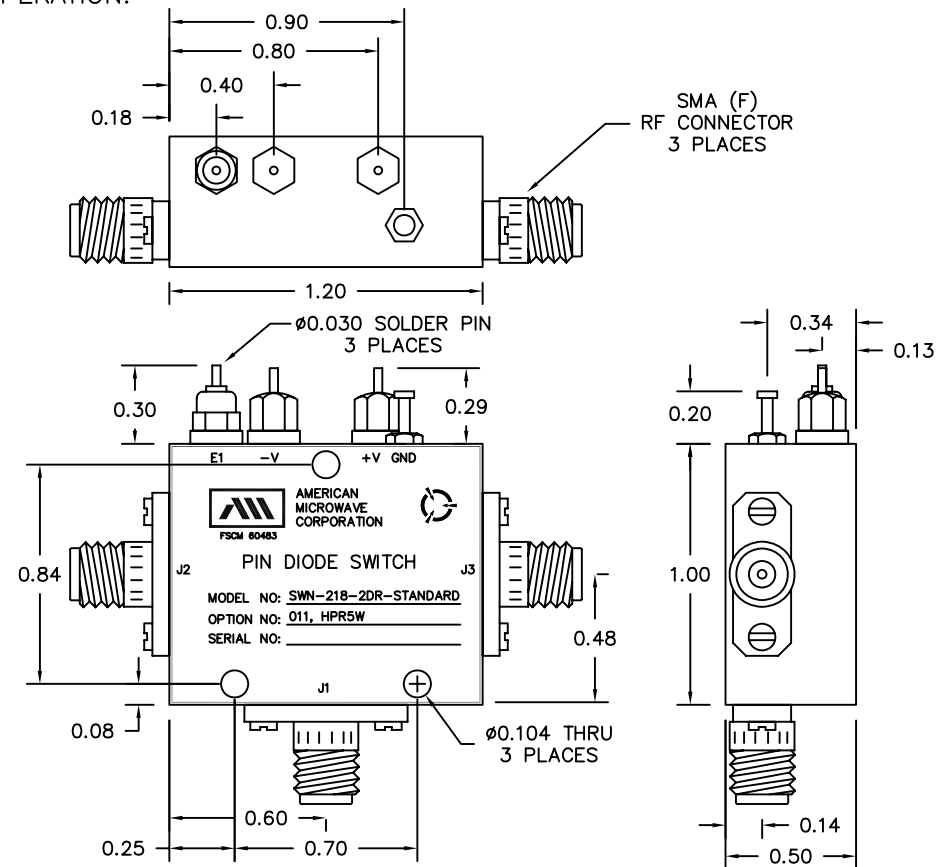
- FREQUENCY RANGE: 400 MHz TO 2.0 GHz (USABLE TO 2.5 GHz)
- INSERTION LOSS: 1.0 dB TYPICAL, 1.25 dB MAXIMUM
- ISOLATION: 22 dB TYPICAL, 20 dB MINIMUM
- VSWR (ALL PORTS): 1.8:1
- SWITCHING SPEED:
(50% TTL TO 90/10% RF) 50 nS MAXIMUM
- RF POWER: 5 WATTS
- CONTROL: TTL SINGLE ENDED 1 BIT
- POWER SUPPLY: +12 VDC @ 25 mA MAXIMUM
-12 VDC @ 25 mA MAXIMUM
- CONNECTORS (RF): SMA FEMALE, 3 PLACES
- CONNECTORS (POWER): SOLDER PINS
- CONNECTORS (CONTROL): SOLDER PINS
- LOGIC "0": J1 TO J2
- LOGIC "1": J1 TO J3
- SIZE: 1.20" (L) x 1.00" (W) x 0.50" (H)
- WEIGHT: 1.5 OUNCE TYPICAL

ENVIRONMENTAL RATINGS

- **TEMPERATURE:** -55°C TO +85°C (OPERATING)
-65°C TO +125°C (STORAGE)
- **HUMIDITY:** MIL-STD-202F, METHOD 103B COND. B
- **SHOCK:** MIL-STD-202F, METHOD 213B COND. B
- **VIBRATION:** MIL-STD-202F, METHOD 204D COND. B
- **ALTITUDE:** MIL-STD-202F, METHOD 105C COND. B
- **TEMPERATURE CYCLE:** MIL-STD-202F, METHOD 107D COND. A

NOTE: SPECIFICATIONS WILL VARY OVER OPERATING TEMPERATURE
NOTE: THE ABOVE SPECIFICATIONS ARE SUBJECT TO CHANGE OR REVISION

REVISIONS				
ZONE	REV.	DESCRIPTION	DATE	APPROVED
	-	ORIGINAL JOB# 606108	08/07/06	



ALL DIMENSIONS ARE IN INCHES
TOLERANCES:
X.XX ±0.020
X.XXX ±0.010

AMERICAN MICROWAVE CORPORATION

7311-G GROVE ROAD
FREDERICK, MARYLAND 21704 USA
TEL: 301-662-4700 FAX: 301-662-4938
WEBSITE: www.americanmicrowavecorp.com
E-MAIL: sales@americanmicrowavecorp.com
ISO 9001:2000 CERTIFIED



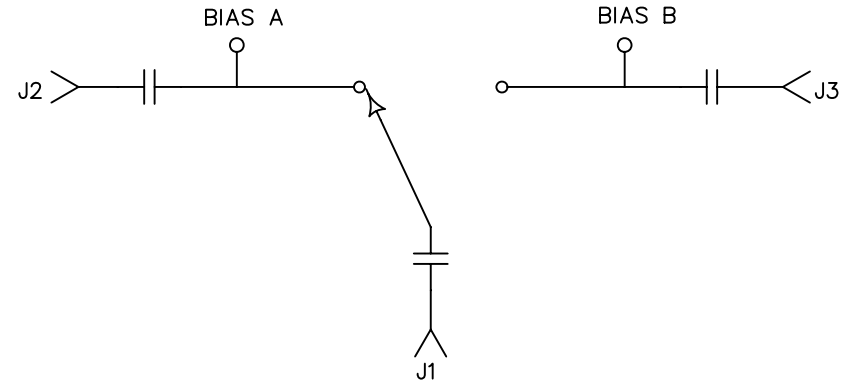
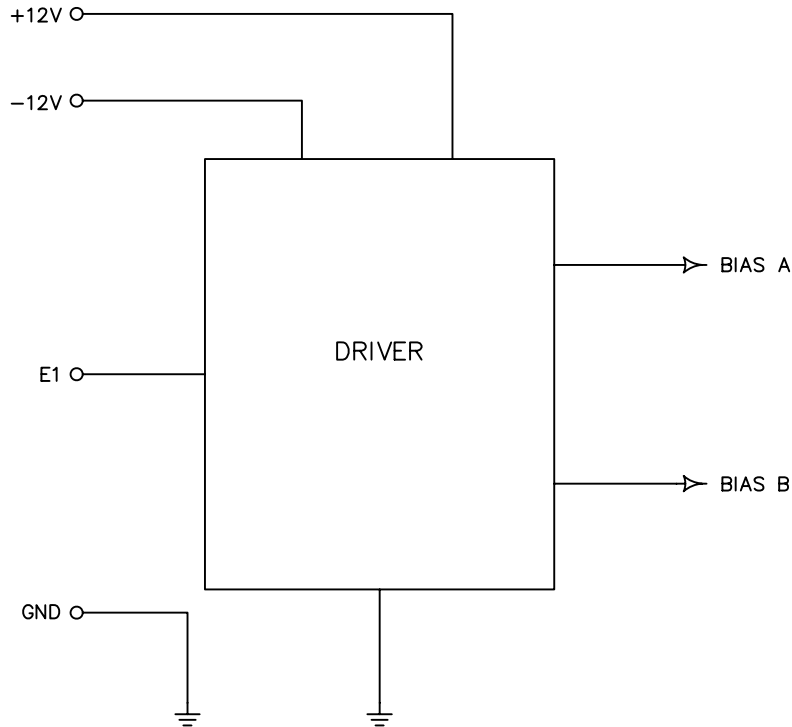
APPROVALS		DATE	TITLE			
DRAWN <i>PRB</i>		08/07/06	PRODUCT FEATURE SWN-218-2DR-STANDARD OPTIONS: 400M2, HPR5W			
REDRAWN <i>RA</i>		09/15/06	400 MHz TO 2 GHz, SINGLE POLE TWO THROW SWITCH			
ISSUED			SIZE	FSCM NO.	DWG NO.	REV.
			A	60483	100-4427-15	-
			SCALE	N:S		SHEET 1 OF 4

DESCRIPTION

AMC MODEL SWN-218-2DR-STANDARD OPTION: 400M2, HPR5W IS A SINGLE POLE TWO THROW, HIGH POWER (5 WATTS) REFLECTIVE T/R SWITCH MODULE WITH VERY LOW INSERTION LOSS, HIGH ISOLATION, LOW VIDEO TRANSIENT AND WITH INTEGRAL TTL DRIVER, DESIGNED FOR 400 MHz TO 2.0 GHz FREQUENCY RANGE OPERATION.

REVISIONS				
ZONE	REV.	DESCRIPTION	DATE	APPROVED
	-	ORIGINAL JOB# 606108	08/07/06	

FUNCTIONAL BLOCK DIAGRAM



AMERICAN MICROWAVE CORPORATION

7311-G GROVE ROAD
 FREDERICK, MARYLAND 21704 USA
 TEL: 301-662-4700 FAX: 301-662-4938
 WEBSITE: www.americanmicrowavecorp.com
 E-MAIL: sales@americanmicrowavecorp.com
 ISO 9001:2000 CERTIFIED



CONFIDENTIAL AND PROPRIETARY

APPROVALS		DATE	TITLE			
DRAWN <i>PRB</i>		08/07/06	PRODUCT FEATURE			
REDRAWN <i>RA</i>		09/15/06	SWN-218-2DR-STANDARD			
ISSUED			OPTIONS: 400M2, HPR5W			
			400 MHz TO 2 GHz, SINGLE POLE TWO THROW SWITCH			
SIZE	FSCM NO.	DWG NO.	REV.			
A	60483	100-4427-15	-			
SCALE N:S			SHEET 3 OF 4			